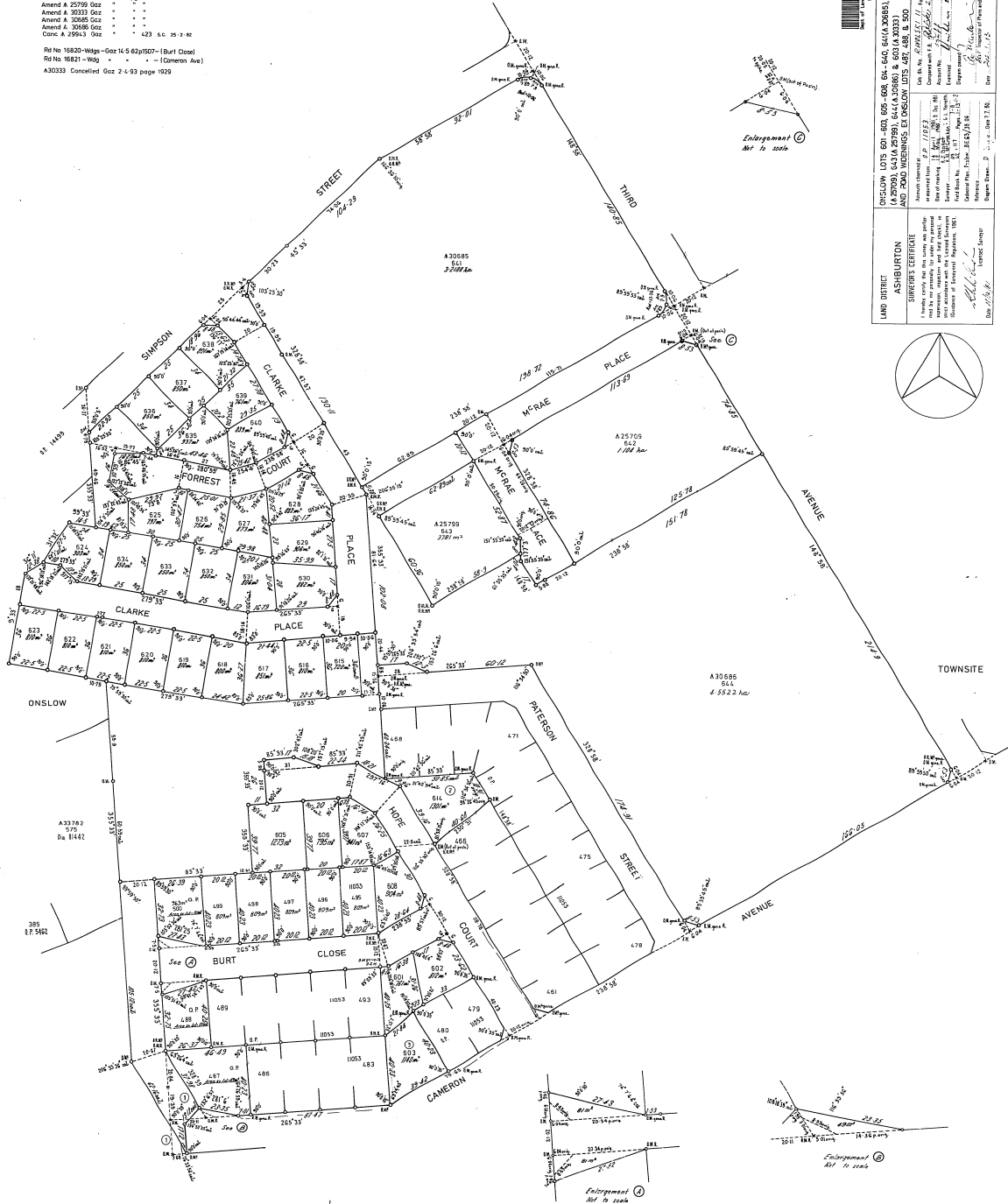


| AMENDMENTS |               |
|------------|---------------|
| ①          | Open Gaz 8033 |
| ②          | Open Gaz 8033 |
| ③          | Open Gaz 8033 |
| ④          | Open Gaz 8033 |
| ⑤          | Open Gaz 8033 |
| ⑥          | Open Gaz 8033 |
| ⑦          | Open Gaz 8033 |
| ⑧          | Open Gaz 8033 |
| ⑨          | Open Gaz 8033 |
| ⑩          | Open Gaz 8033 |
| ⑪          | Open Gaz 8033 |
| ⑫          | Open Gaz 8033 |
| ⑬          | Open Gaz 8033 |
| ⑭          | Open Gaz 8033 |
| ⑮          | Open Gaz 8033 |
| ⑯          | Open Gaz 8033 |
| ⑰          | Open Gaz 8033 |
| ⑱          | Open Gaz 8033 |
| ⑲          | Open Gaz 8033 |
| ⑳          | Open Gaz 8033 |
| ㉑          | Open Gaz 8033 |
| ㉒          | Open Gaz 8033 |
| ㉓          | Open Gaz 8033 |
| ㉔          | Open Gaz 8033 |
| ㉕          | Open Gaz 8033 |
| ㉖          | Open Gaz 8033 |
| ㉗          | Open Gaz 8033 |
| ㉘          | Open Gaz 8033 |
| ㉙          | Open Gaz 8033 |
| ㉚          | Open Gaz 8033 |
| ㉛          | Open Gaz 8033 |
| ㉜          | Open Gaz 8033 |
| ㉝          | Open Gaz 8033 |
| ㉞          | Open Gaz 8033 |
| ㉟          | Open Gaz 8033 |
| ㊱          | Open Gaz 8033 |
| ㊲          | Open Gaz 8033 |
| ㊳          | Open Gaz 8033 |
| ㊴          | Open Gaz 8033 |
| ㊵          | Open Gaz 8033 |
| ㊶          | Open Gaz 8033 |
| ㊷          | Open Gaz 8033 |
| ㊸          | Open Gaz 8033 |
| ㊹          | Open Gaz 8033 |
| ㊺          | Open Gaz 8033 |
| ㊻          | Open Gaz 8033 |
| ㊼          | Open Gaz 8033 |
| ㊽          | Open Gaz 8033 |
| ㊾          | Open Gaz 8033 |
| ㊿          | Open Gaz 8033 |

Includes Lots 415, 425, 467, 481, 482, 494  
501 - 531 (inclusive), 534, 535 and 560  
Supersedes Pt O P 11053 and Dias 66637 67953 & 74214

Road Closure gaz. 24.4.81  
Amend A 25709 Gaz 5 2 83 pg 422  
Amend A 25709 Gaz - - -  
Amend A 30333 Gaz - - -  
Amend A 30585 Gaz - - -  
Amend A 30586 Gaz - - -  
Canc A 29843 Gaz - - - 423 s.c. 25-2-82

Rd No 16820-Wdg - Gaz 16-5 82p807-1 (Burt Close)  
Rd No 16821-Wdg - - - - - (Cameron Ave)  
A30333 Cancelled Gaz 2-4-93 page 1929



|   |   |
|---|---|
| LAND DISTRICT<br>GASBUXTON  | SECTION LOTS 609, 608, 606, 604, 603, 601, 600, 599, 597, 595, 593, 591, 589, 587, 585, 583, 581, 579, 577, 575, 573, 571, 569, 567, 565, 563, 561, 559, 557, 555, 553, 551, 549, 547, 545, 543, 541, 539, 537, 535, 533, 531, 529, 527, 525, 523, 521, 519, 517, 515, 513, 511, 509, 507, 505, 503, 501, 499, 497, 495, 493, 491, 489, 487, 485, 483, 481, 479, 477, 475, 473, 471, 469, 467, 465, 463, 461, 459, 457, 455, 453, 451, 449, 447, 445, 443, 441, 439, 437, 435, 433, 431, 429, 427, 425, 423, 421, 419, 417, 415, 413, 411, 409, 407, 405, 403, 401, 399, 397, 395, 393, 391, 389, 387, 385, 383, 381, 379, 377, 375, 373, 371, 369, 367, 365, 363, 361, 359, 357, 355, 353, 351, 349, 347, 345, 343, 341, 339, 337, 335, 333, 331, 329, 327, 325, 323, 321, 319, 317, 315, 313, 311, 309, 307, 305, 303, 301, 299, 297, 295, 293, 291, 289, 287, 285, 283, 281, 279, 277, 275, 273, 271, 269, 267, 265, 263, 261, 259, 257, 255, 253, 251, 249, 247, 245, 243, 241, 239, 237, 235, 233, 231, 229, 227, 225, 223, 221, 219, 217, 215, 213, 211, 209, 207, 205, 203, 201, 199, 197, 195, 193, 191, 189, 187, 185, 183, 181, 179, 177, 175, 173, 171, 169, 167, 165, 163, 161, 159, 157, 155, 153, 151, 149, 147, 145, 143, 141, 139, 137, 135, 133, 131, 129, 127, 125, 123, 121, 119, 117, 115, 113, 111, 109, 107, 105, 103, 101, 99, 97, 95, 93, 91, 89, 87, 85, 83, 81, 79, 77, 75, 73, 71, 69, 67, 65, 63, 61, 59, 57, 55, 53, 51, 49, 47, 45, 43, 41, 39, 37, 35, 33, 31, 29, 27, 25, 23, 21, 19, 17, 15, 13, 11, 9, 7, 5, 3, 1 |
| FILE No. 7288/79  | PLAN No. 14895  |
| DATE OF REGISTRATION  | DATE OF REGISTRATION  |
| SECTION LOTS 609, 608, 606, 604, 603, 601, 600, 599, 597, 595, 593, 591, 589, 587, 585, 583, 581, 579, 577, 575, 573, 571, 569, 567, 565, 563, 561, 559, 557, 555, 553, 551, 549, 547, 545, 543, 541, 539, 537, 535, 533, 531, 529, 527, 525, 523, 521, 519, 517, 515, 513, 511, 509, 507, 505, 503, 501, 499, 497, 495, 493, 491, 489, 487, 485, 483, 481, 479, 477, 475, 473, 471, 469, 467, 465, 463, 461, 459, 457, 455, 453, 451, 449, 447, 445, 443, 441, 439, 437, 435, 433, 431, 429, 427, 425, 423, 421, 419, 417, 415, 413, 411, 409, 407, 405, 403, 401, 399, 397, 395, 393, 391, 389, 387, 385, 383, 381, 379, 377, 375, 373, 371, 369, 367, 365, 363, 361, 359, 357, 355, 353, 351, 349, 347, 345, 343, 341, 339, 337, 335, 333, 331, 329, 327, 325, 323, 321, 319, 317, 315, 313, 311, 309, 307, 305, 303, 301, 299, 297, 295, 293, 291, 289, 287, 285, 283, 281, 279, 277, 275, 273, 271, 269, 267, 265, 263, 261, 259, 257, 255, 253, 251, 249, 247, 245, 243, 241, 239, 237, 235, 233, 231, 229, 227, 225, 223, 221, 219, 217, 215, 213, 211, 209, 207, 205, 203, 201, 199, 197, 195, 193, 191, 189, 187, 185, 183, 181, 179, 177, 175, 173, 171, 169, 167, 165, 163, 161, 159, 157, 155, 153, 151, 149, 147, 145, 143, 141, 139, 137, 135, 133, 131, 129, 127, 125, 123, 121, 119, 117, 115, 113, 111, 109, 107, 105, 103, 101, 99, 97, 95, 93, 91, 89, 87, 85, 83, 81, 79, 77, 75, 73, 71, 69, 67, 65, 63, 61, 59, 57, 55, 53, 51, 49, 47, 45, 43, 41, 39, 37, 35, 33, 31, 29, 27, 25, 23, 21, 19, 17, 15, 13, 11, 9, 7, 5, 3, 1 |   |
| SECTION LOTS 609, 608, 606, 604, 603, 601, 600, 599, 597, 595, 593, 591, 589, 587, 585, 583, 581, 579, 577, 575, 573, 571, 569, 567, 565, 563, 561, 559, 557, 555, 553, 551, 549, 547, 545, 543, 541, 539, 537, 535, 533, 531, 529, 527, 525, 523, 521, 519, 517, 515, 513, 511, 509, 507, 505, 503, 501, 499, 497, 495, 493, 491, 489, 487, 485, 483, 481, 479, 477, 475, 473, 471, 469, 467, 465, 463, 461, 459, 457, 455, 453, 451, 449, 447, 445, 443, 441, 439, 437, 435, 433, 431, 429, 427, 425, 423, 421, 419, 417, 415, 413, 411, 409, 407, 405, 403, 401, 399, 397, 395, 393, 391, 389, 387, 385, 383, 381, 379, 377, 375, 373, 371, 369, 367, 365, 363, 361, 359, 357, 355, 353, 351, 349, 347, 345, 343, 341, 339, 337, 335, 333, 331, 329, 327, 325, 323, 321, 319, 317, 315, 313, 311, 309, 307, 305, 303, 301, 299, 297, 295, 293, 291, 289, 287, 285, 283, 281, 279, 277, 275, 273, 271, 269, 267, 265, 263, 261, 259, 257, 255, 253, 251, 249, 247, 245, 243, 241, 239, 237, 235, 233, 231, 229, 227, 225, 223, 221, 219, 217, 215, 213, 211, 209, 207, 205, 203, 201, 199, 197, 195, 193, 191, 189, 187, 185, 183, 181, 179, 177, 175, 173, 171, 169, 167, 165, 163, 161, 159, 157, 155, 153, 151, 149, 147, 145, 143, 141, 139, 137, 135, 133, 131, 129, 127, 125, 123, 121, 119, 117, 115, 113, 111, 109, 107, 105, 103, 101, 99, 97, 95, 93, 91, 89, 87, 85, 83, 81, 79, 77, 75, 73, 71, 69, 67, 65, 63, 61, 59, 57, 55, 53, 51, 49, 47, 45, 43, 41, 39, 37, 35, 33, 31, 29, 27, 25, 23, 21, 19, 17, 15, 13, 11, 9, 7, 5, 3, 1 |   |
| SECTION LOTS 609, 608, 606, 604, 603, 601, 600, 599, 597, 595, 593, 591, 589, 587, 585, 583, 581, 579, 577, 575, 573, 571, 569, 567, 565, 563, 561, 559, 557, 555, 553, 551, 549, 547, 545, 543, 541, 539, 537, 535, 533, 531, 529, 527, 525, 523, 521, 519, 517, 515, 513, 511, 509, 507, 505, 503, 501, 499, 497, 495, 493, 491, 489, 487, 485, 483, 481, 479, 477, 475, 473, 471, 469, 467, 465, 463, 461, 459, 457, 455, 453, 451, 449, 447, 445, 443, 441, 439, 437, 435, 433, 431, 429, 427, 425, 423, 421, 419, 417, 415, 413, 411, 409, 407, 405, 403, 401, 399, 397, 395, 393, 391, 389, 387, 385, 383, 381, 379, 377, 375, 373, 371, 369, 367, 365, 363, 361, 359, 357, 355, 353, 351, 349, 347, 345, 343, 341, 339, 337, 335, 333, 331, 329, 327, 325, 323, 321, 319, 317, 315, 313, 311, 309, 307, 305, 303, 301, 299, 297, 295, 293, 291, 289, 287, 285, 283, 281, 279, 277, 275, 273, 271, 269, 267, 265, 263, 261, 259, 257, 255, 253, 251, 249, 247, 245, 243, 241, 239, 237, 235, 233, 231, 229, 227, 225, 223, 221, 219, 217, 215, 213, 211, 209, 207, 205, 203, 201, 199, 197, 195, 193, 191, 189, 187, 185, 183, 181, 179, 177, 175, 173, 171, 169, 167, 165, 163, 161, 159, 157, 155, 153, 151, 149, 147, 145, 143, 141, 139, 137, 135, 133, 131, 129, 127, 125, 123, 121, 119, 117, 115, 113, 111, 109, 107, 105, 103, 101, 99, 97, 95, 93, 91, 89, 87, 85, 83, 81, 79, 77, 75, 73, 71, 69, 67, 65, 63, 61, 59, 57, 55, 53, 51, 49, 47, 45, 43, 41, 39, 37, 35, 33, 31, 29, 27, 25, 23, 21, 19, 17, 15, 13, 11, 9, 7, 5, 3, 1 |   |

